



STATE OF NORTH CAROLINA
DEPARTMENT OF TRANSPORTATION

ROY COOPER
GOVERNOR

J.R. "JOEY" HOPKINS
SECRETARY

December 9, 2024

Addendum No. 1

RE: Contract # C204969

WBS # 67063.3.1

STATE FUNDED

Anson County (BR-0063)

BRIDGE #030087 OVER RICHARDSON CREEK ON NC-742.

December 17, 2024 Letting

To Whom It May Concern:

Reference is made to the plans furnished to you on this project.

The following revisions have been made to the Traffic Management plans.

Sheet No.	Revision
TMP-3	"INSTALL AND COVER THE OFF-SITE DETOUR SIGNING SHOWN ON SHEET TMP-1D" note has been moved to Step #2.
TMP-4, TMP-5, TMP-6, TMP-7	Station ranges updated.

Please void the above listed Sheets in your Plans and staple the revised Sheets thereto.

The contract will be prepared accordingly.

Sincerely,

Signed by:

52C46046381F443...

Ronald E. Davenport, Jr., PE
State Contract Officer

RED/cms
Attachments

cc: Mr. Wiley W. Jones III, PE
Mr. Brett D. Canipe, PE
Mr. Ken Kennedy, PE
Mr. Malcolm Bell

Mr. Forrest Dungan, PE
Ms. Jaci Kincaid
Mr. Jon Weathersbee, PE
Project File (2)

PROJ. REFERENCE NO.	SHEET NO.
BR-0063	TMP-3



PHASING

NOTES:
 BEFORE BEGINNING ANY CONSTRUCTION ACTIVITIES, THE CONTRACTOR SHALL INSTALL ALL ADVANCE WARNING SIGNS (RSD 1101.01 SHEET 3 OF 3) AND TRAFFIC CONTROL DEVICES. FIELD VERIFY LOCATIONS WITH THE RESIDENT ENGINEER PRIOR TO INSTALLATION.

MAINTAIN VEHICULAR ACCESS TO ALL RESIDENCES AND BUSINESSES DURING THE LIFE OF THE CONTRACT, UNLESS OTHERWISE NOTED IN THE PHASING PLANS OR DIRECTED BY THE RESIDENT ENGINEER.

COMPLETE ANY PROPOSED OR TEMPORARY WIDENING IN SUCH A MANNER THAT NO PONDING OF WATER WILL OCCUR WITHIN THE TRAVEL LANE.

WHEN USING LANE CLOSURES (RSD 1101.02), RETURN TRAFFIC TO EXISTING AND/OR TEMPORARY TRAFFIC PATTERN UPON ACTIVITIES COMPLETION, UNLESS OTHERWISE NOTED IN THE PHASING PLANS.

WHEN PHASING STATES TO USE LANE CLOSURES, REFER TO THE FOLLOWING FOR ALL EXISTING AND PROPOSED ROADS:

-ALL TWO-LANE/TWO-WAY FACILITIES SEE RSD 1101.02 SHEET 1 OF 19

COMPLETE PAVING UP TO, BUT NOT INCLUDING, THE FINAL LAYER OF SURFACE COURSE UNTIL STATED TO PLACE FINAL LAYER IN THE PHASING PLANS.

WHEN WEDGING OVER EXISTING PAVEMENT, WEDGE TO PROPOSED ELEVATION (LESS THE FINAL LAYER OF SURFACE COURSE), OR WEDGE AS NEEDED TO MAINTAIN TRAFFIC. MAINTAIN POSITIVE DRAINAGE AND MAINTAIN A MAXIMUM 0.04 ROLLOVER IN BOTH EXISTING AND/OR TEMPORARY TRAVEL LANES.

REPLACE MARKINGS AND RETURN TRAFFIC TO THE CURRENT TRAFFIC PATTERN AT THE END OF EACH WORK PERIOD UNLESS OTHERWISE NOTED IN THE PHASING OR DIRECTED BY THE ENGINEER.

FOR ALL SHOULDER CLOSURES, SEE RSD 1101.04 SHEET 1 OF 2. WHEN PORTABLE CONCRETE BARRIER (PCB) IS PRESENT ON SHOULDERS, PLACE SHOULDER CLOSURE SIGNS & DEVICES IN ADVANCE OF PCB.

PHASE 1

STEP 1: (SEE TMP-4 THRU TMP-5)
 AWAY FROM TRAFFIC, BEHIND EXISTING GUARDRAIL AND USING RSD 1101.02, SHEET 1 OF 19 AS NEEDED, BEGIN PROPOSED BRIDGE CONSTRUCTION AND GRADING UP TO THE APPROXIMATE ELEVATION OF THE EXISTING SHOULDER.

USING RSD 1101.02, SHEET 1 OF 19 AS NEEDED, INSTALL TEMPORARY GUARDRAIL AND TEMPORARY SHORING.

STEP 2:
 AWAY FROM TRAFFIC AND USING RSD 1101.02, SHEET 1 OF 19 AS NEEDED, COMPLETE CONSTRUCTION OF THE PROPOSED BRIDGE AND APPROACHES UP TO, BUT NOT INCLUDING THE FINAL LAYER OF SURFACE COURSE. CONSTRUCT WESTBOUND APPROACH FROM -L- STA. 25+30 +/- TO STA. 30+25 TO AN ELEVATION UP TO THE EXISTING EDGE OF PAVEMENT OR AS DIRECTED BY THE ENGINEER.

INSTALL AND COVER THE OFF-SITE DETOUR SIGNING SHOWN ON SHEET TMP-1D.

THE CONTRACTOR SHALL COMPLETE THE WORK OF PHASE 1, STEP 3 IN ONE WEEKEND WORKING FROM FRIDAY 7:00 P.M. TO MONDAY 6:00 A.M., SEE INTERMEDIATE CONTRACT TIMES AND LIQUIDATED DAMAGES.

STEP 3:
 USING RSD 1101.03 SHEET 1 OF 9 CLOSE -L- (NC-742) AND DETOUR TRAFFIC ALONG ROUTE SHOWN ON TMP-1D.

AWAY FROM TRAFFIC, COMPLETE TIE-IN CONSTRUCTION AND PLACE TEMPORARY MARKINGS AND MARKERS IN THE PHASE 2 TRAFFIC PATTERN.

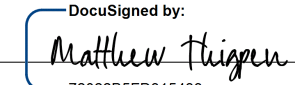
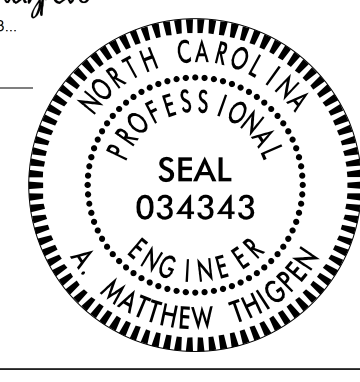

REMOVE ROAD CLOSURE DEVICES AND RE-OPEN TO THE PHASE 2 TRAFFIC PATTERN.

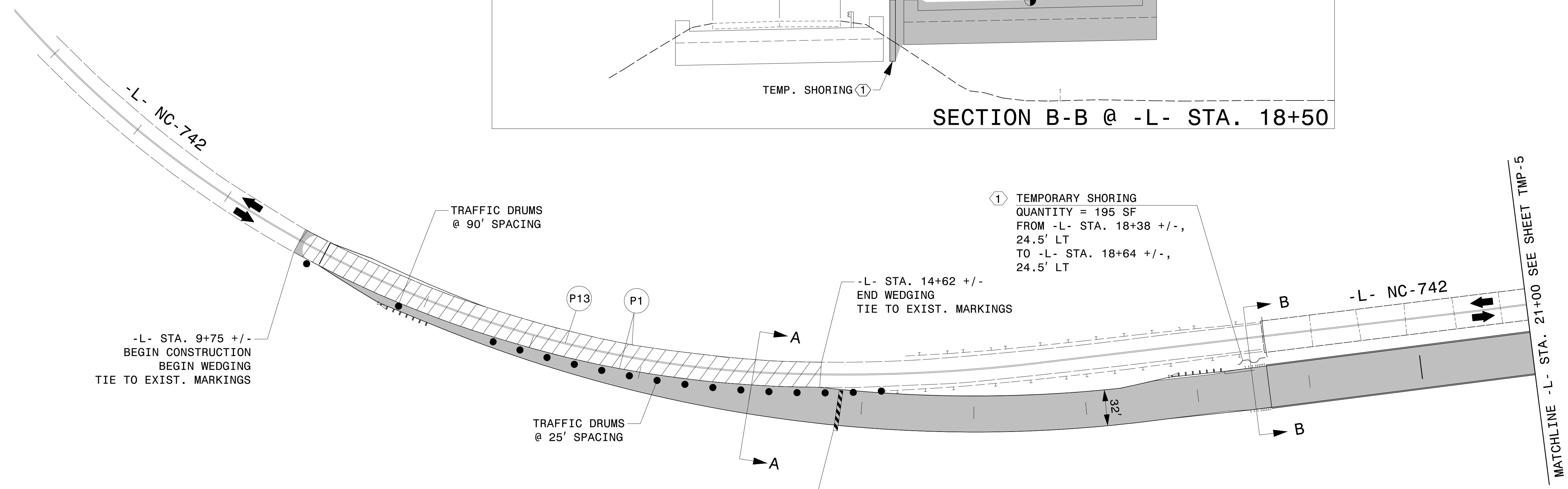
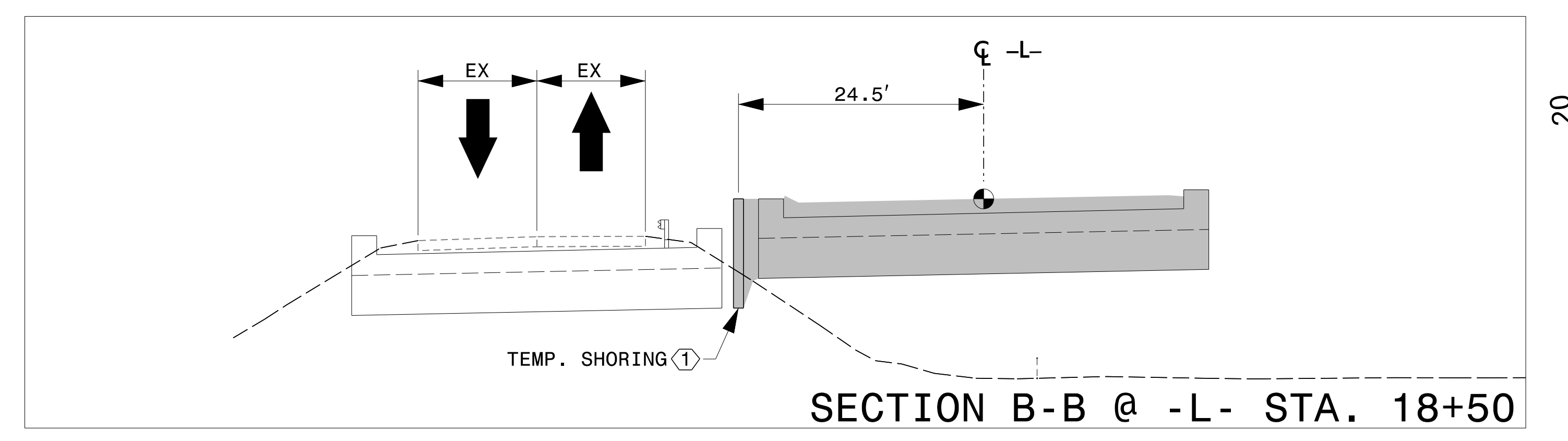
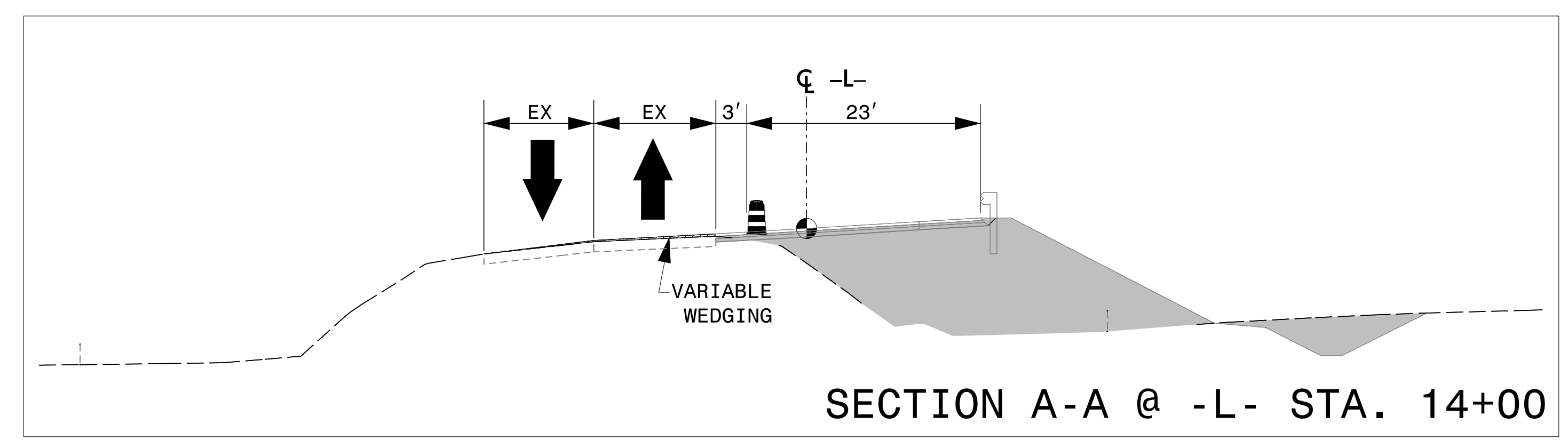
PHASE 2

STEP 1: (SEE TMP-6 THRU TMP-7)
 AWAY FROM TRAFFIC AND USING RSD 1101.02, SHEET 1 OF 19 AS NEEDED, CONSTRUCT ANY REMAINING SIDE SLOPES, PAVEMENT REMOVAL AND BRIDGE DEMOLITION.

STEP 2:
 USING RSD 1101.02, SHEET 1 OF 19, CONSTRUCT THE FINAL LAYER OF SURFACE COURSE, THEN PLACE THE FINAL MARKINGS AND MARKERS AND RE-OPEN TO THE FINAL TRAFFIC PATTERN. (SEE FINAL PAVEMENT MARKING PLAN)

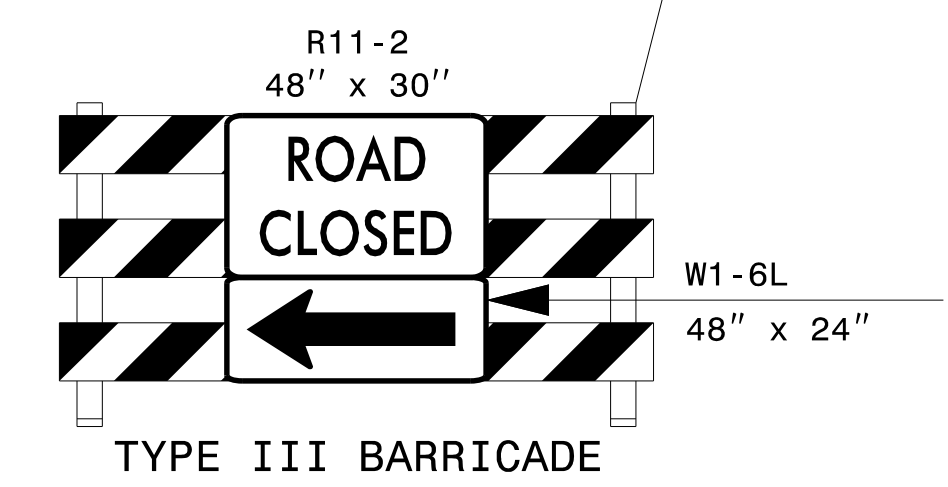
12/6/2024 C:\Users\Matt\Thigpen\OneDrive\Projects\00038_BR-0063\BR-0063\TrafficControl\TCP\BR0063_tc_tmp_03.dgn User:Matt Thigpen

APPROVED:  <small>DocuSigned by: Matthew Thigpen 7202285FD915433</small> DATE: 12/6/2024			<h1 style="margin: 0;">PHASING</h1>
DOCUMENT NOT CONSIDERED FINAL UNLESS ALL SIGNATURES COMPLETED			



-L- STA. 9+75 +/-
BEGIN CONSTRUCTION
BEGIN WEDGING
TIE TO EXIST. MARKINGS

① TEMPORARY SHORING
QUANTITY = 195 SF
FROM -L- STA. 18+38 +/-,
24.5' LT
TO -L- STA. 18+64 +/-,
24.5' LT

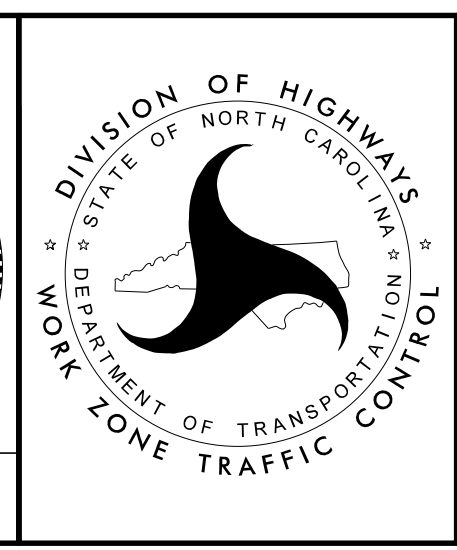


APPROVED: *Matthew Thigpen*
7202285F0316433

DATE: 12/6/2024

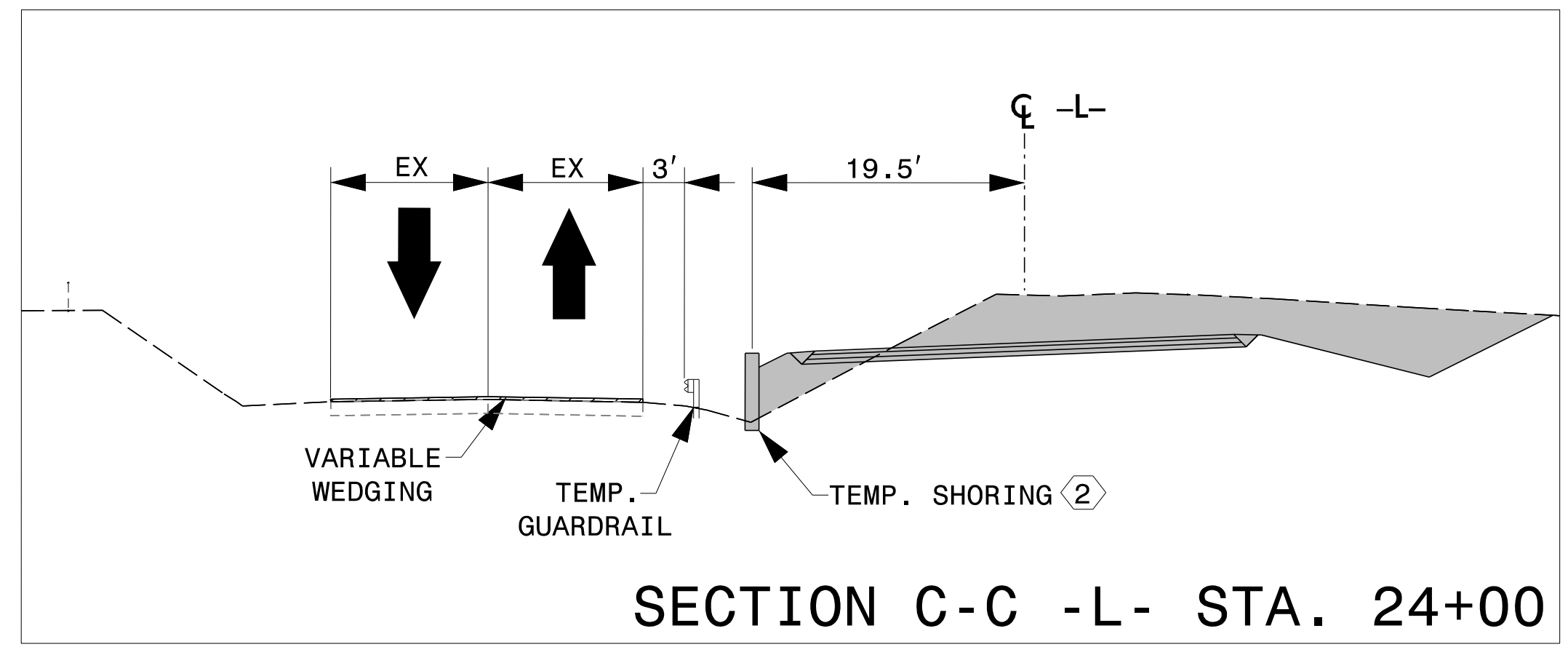
SEAL
034343
ENGINEER
MATTHEW THIGPEN

DOCUMENT NOT CONSIDERED FINAL
UNLESS ALL SIGNATURES COMPLETED



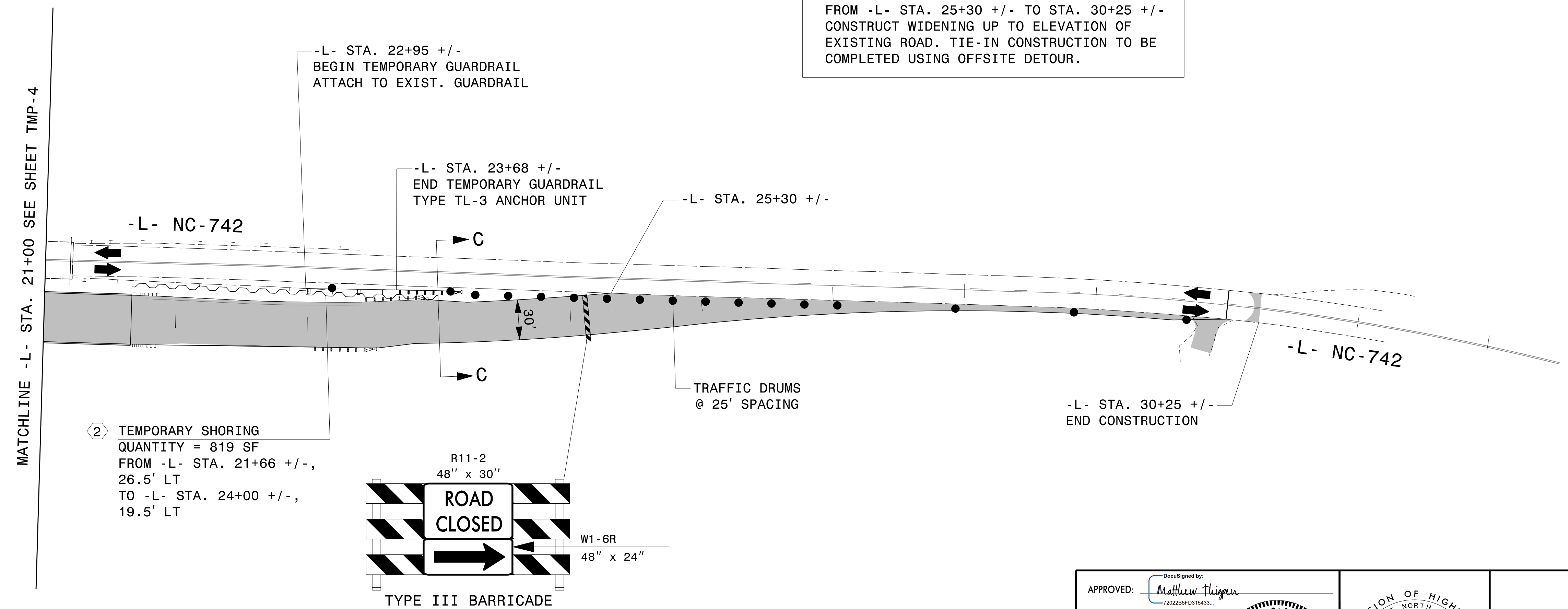
PHASE I

12/6/2024 C:\Users\Matt\Thigpen\OneDrive\Projects\000038_BR-0063\BR-0063\TrafficControl\TCP\BR0063_tc_tmp04.dgn User:Matt Thigpen



30

NOTE:
FROM -L- STA. 25+30 +/- TO STA. 30+25 +/-
CONSTRUCT WIDENING UP TO ELEVATION OF
EXISTING ROAD. TIE-IN CONSTRUCTION TO BE
COMPLETED USING OFFSITE DETOUR.



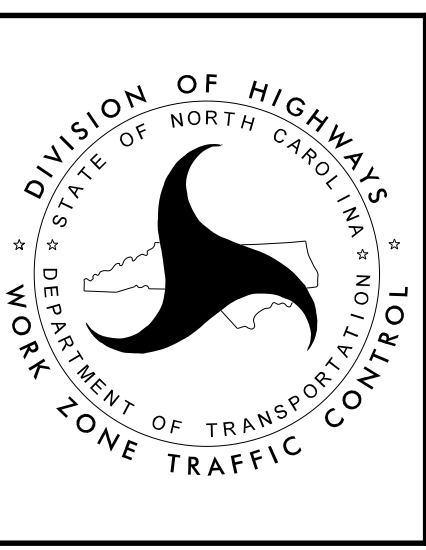
APPROVED: *Matthew Thigpen*
DATE: 12/6/2024

SEAL

7202285F0315433

PROFESSIONAL
SEAL
034343
ENGINEER
MATTHEW THIGPEN

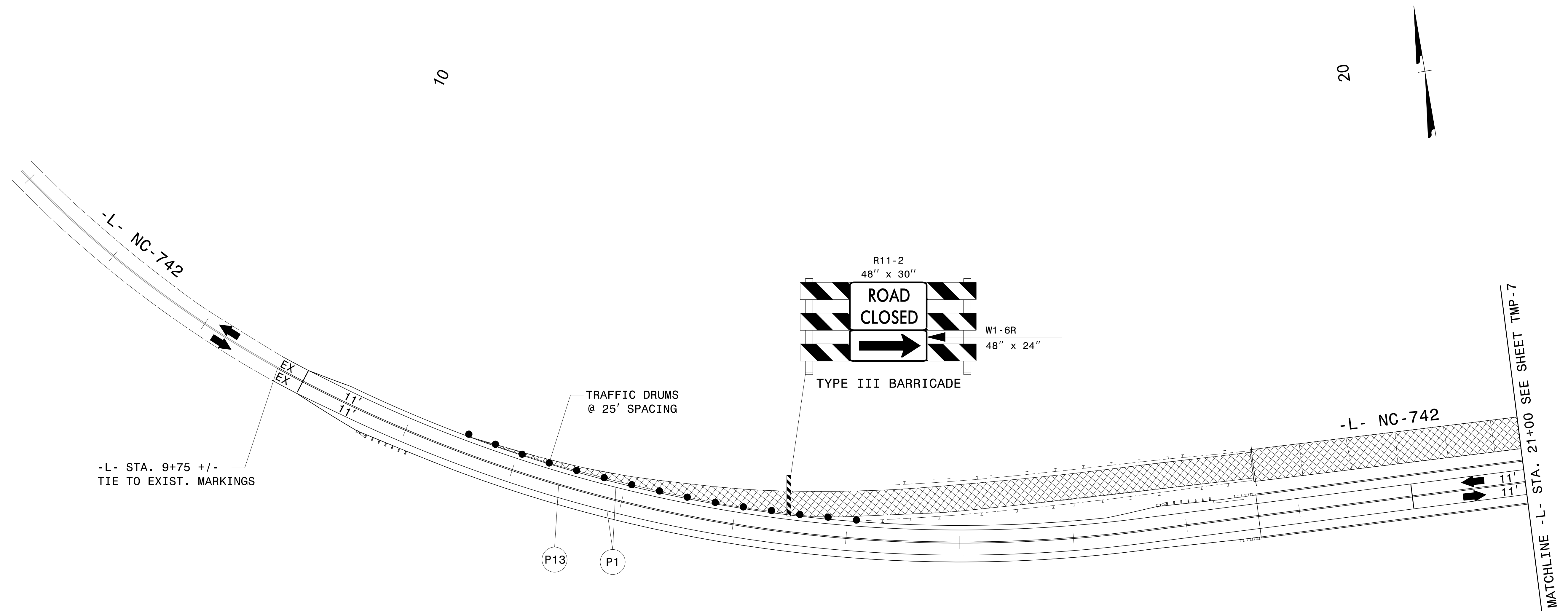
DOCUMENT NOT CONSIDERED FINAL
UNLESS ALL SIGNATURES COMPLETED



PHASE I

12/6/2024 C:\Users\Matt\Thigpen\OneDrive\Projects\00038_BR-0063\BR-0063\TrafficControl\TCP\BR0063_tc_tmp05.dgn User:Matt Thigpen

12/6/2024
C:\Users\Matt\Thigpen\OneDrive\Projects\00038_BR-0063\TrafficControl\TCP\BR0063_tcp_tmp06.dgn
User:Matt Thigpen



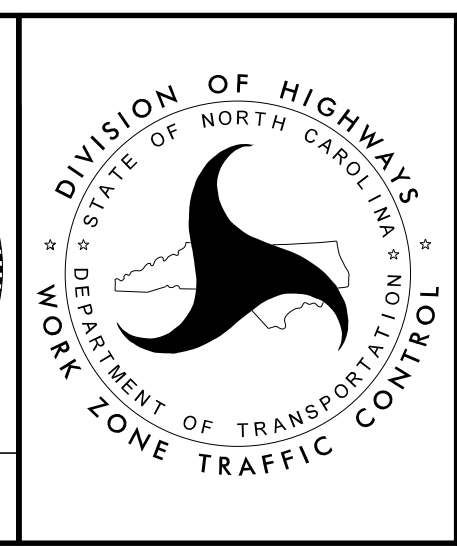
APPROVED: *Matthew Thigpen*
72022B5FD315433

DATE: 12/6/2024

SEAL

PROFESSIONAL SEAL
034343
ENGINEER
MATTHEW THIGPEN

**DOCUMENT NOT CONSIDERED FINAL
UNLESS ALL SIGNATURES COMPLETED**



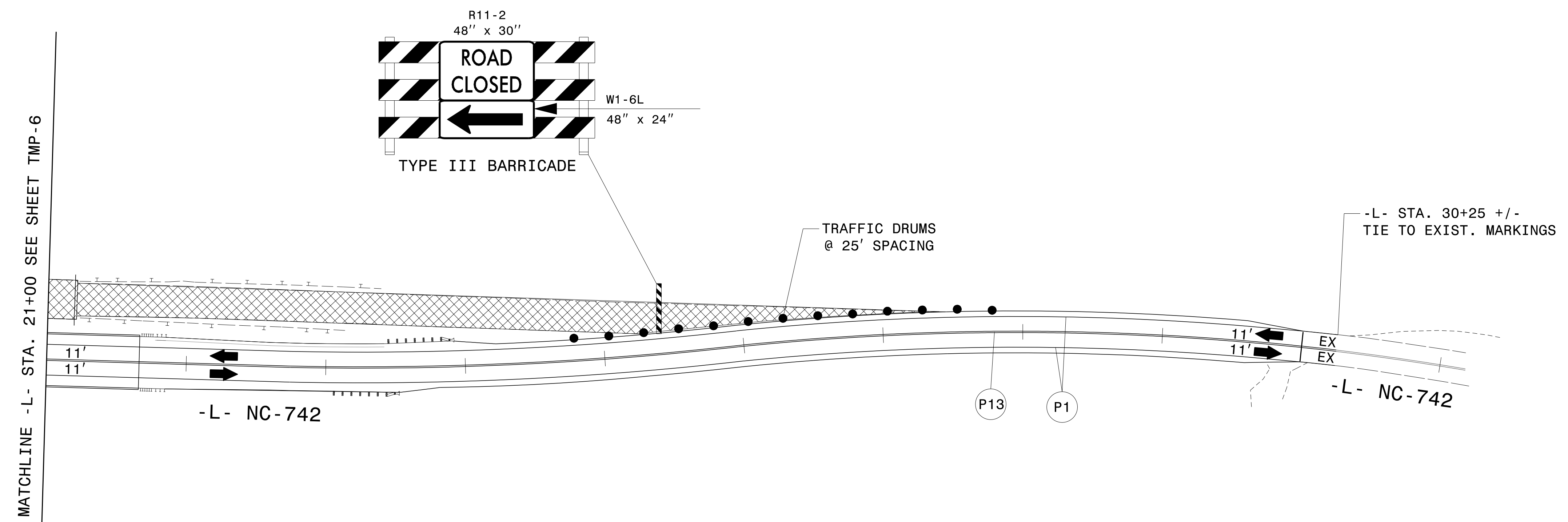
PHASE II

PROJ. REFERENCE NO.	SHEET NO.
BR-0063	TMP-7

THIGPEN
ENGINEERING
3612 Griffice Mill Road
Raleigh, NC 27610
License: P-1116



30



12/6/2024
C:\Users\Matt.Thigpen\OneDrive\Projects\00038_BR-0063\BR-0063\TrafficControl\TCP\BR0063_tc_tmp07.dgn
User:Matt.Thigpen

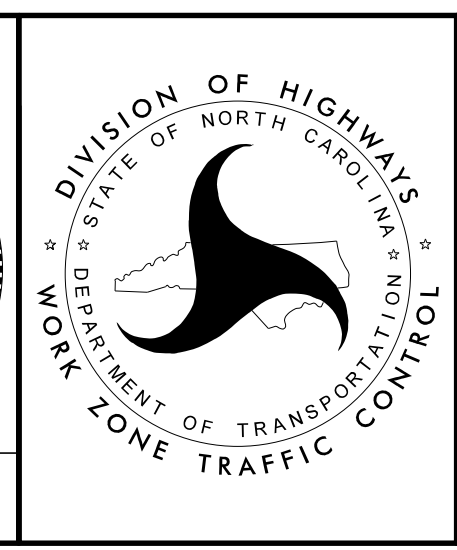
APPROVED: *Matthew Thigpen*
DATE: 12/6/2024

SEAL

7202289FD315433

PROFESSIONAL
SEAL
034343
ENGINEER
MATTHEW THIGPEN

**DOCUMENT NOT CONSIDERED FINAL
UNLESS ALL SIGNATURES COMPLETED**



PHASE II